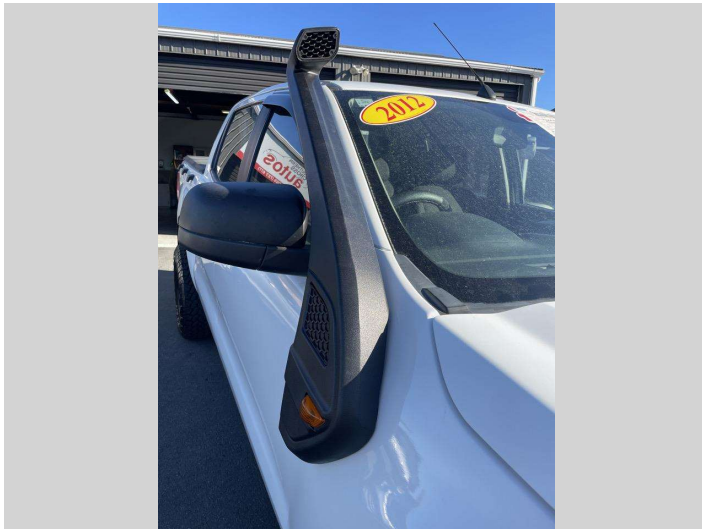



2012 Ford Ranger RANGER 4X4 DOUBLE CAB



Purchase Price **\$22,990**
Includes GST, Registration & Licensing

Indicative repayments
\$148.46 per week*
Based on a 208 week term & no deposit.
Total repayments (208) = **\$30,879.47**



peace of mind motoring 

Top features

- » 4 Wheel Drive
- » 5 Seats
- » 6 Air bags
- » ABS
- » ABS Braking
- » Air Conditioning
- » Alarm
- » Automatic 6 Spd
- » AUX
- » BLACK STEELIE WHEEL'S
- » Bluetooth
- » Brake Assist
- » Cam Chain Cam type
- » Car Alarm
- » CD Player
- » Central Locking
- » Central Locking
- » Child seat anchor poin...

Body Style
4 door, Ute

Odometer
275,925 km

Engine
2200 cc, Internal Combustion

Fuel Type
Diesel

Transmission
6 Speed Automatic, 4WD

Wheels
-

VIN
MNAUMFF80BW106627

Interior
Charcoal, Cloth

Safety
-

Reg No.
LUM28

Ext Colour
White

History
Ex-Overseas, 4 owners

Seats
5 seats

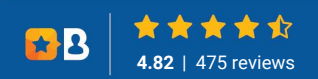
CO2 Emissions
-

Energy Economy
-

Stock ID: 2381



Southern Cross Autos | Phone 07 308 0265 | Email
clive@southerncrossautos.co.nz
7 Gateway Drive, Coastlands, WHAKATANE 3120, New Zealand
www.southerncrossautos.co.nz



* Southern Cross Autos is not a lender nor a financial adviser. Any amounts displayed should not be seen as an offer of finance or taken as financial advice. The interest rate, fees and loan term used in this calculation may not actually represent those available from lenders. Actual interest rates, fees and loan terms will vary per lender and are typically based on an assessment of your credit risk and responsible lending criteria. Any repayment amounts displayed are indicative only and have been calculated using several other indicative inputs. The interest rate used in this calculation is an arbitrary 13.80%, however exact interest rates vary per lender. The term of the loan used in this calculation is 208 week. Exact terms available vary per lender although options typically include 6, 12, 18, 24, 36, 48 and 60 months. This calculation also includes two typical mandatory fees charged by lenders. These are an account admin fee of \$8.00 per month (other payment frequencies may be available) and a one-off establishment fee of \$422.00. Typically, this fee can be paid upfront or, as in this calculation, be capitalised over the contract term, ie. included in the loan amount. These fees can vary per lender and other non-mandatory fees and charges may also apply. The total amount of repayments has been calculated by multiplying 208 weekly repayments (based on a 208 week term) by the weekly repayment amount of \$148.46 which equals \$30,879.47. This calculator does not consider any of your own personal circumstances and we strongly suggest you seek budgeting advice prior to committing to any loan contract. Responsible lending criteria and lender terms and conditions will likely apply to any finalised loan contract. Proof of security and/or vehicle insurance may also be required before proceeding.