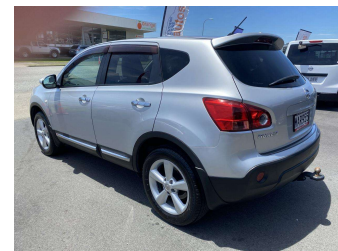
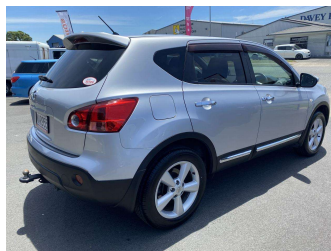
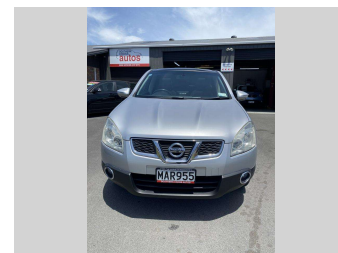




2010 Nissan Dualis



Purchase Price **\$11,990**
Includes GST, Registration & Licensing

Indicative repayments
\$79.57 per week*
Based on a 208 week term & no deposit.
Total repayments (208) = **\$16,551.34**



peace of mind motoring 

Top features

- » 16 valve DOHC Engine d...
- » 5 Seats
- » 6 Air bags
- » ABS
- » ABS Braking w/ EBD
- » Air Conditioning
- » Alarm
- » Alloys
- » Automatic 6 Spd
- » Body Kit (Factory)
- » Brake Assist
- » Cam Chain Cam type
- » Car Alarm
- » Central Locking
- » Central Locking
- » Climate Control
- » Driving/Fog Lights
- » Electric mirrors

Body Style
5 door, SUV

Odometer
118,470 km

Engine
1990 cc, Internal Combustion

Fuel Type
Petrol

Transmission
CVT, Front Wheel

Wheels
-

VIN
7AT0DH7HX19300485

Interior
Black, Cloth

Safety
-

Reg No.
MAR955

Ext Colour
Silver

History
Ex-Overseas, 1 owner

Seats
5 seats, Cloth


CO2 Emissions
-

Energy Economy
-

Stock ID: 2474



Southern Cross Autos | Phone 07 308 0265 | Email
clive@southerncrossautos.co.nz
7 Gateway Drive, Coastlands, WHAKATANE 3120, New Zealand
www.southerncrossautos.co.nz



4.82 | 490 reviews

* Southern Cross Autos is not a lender nor a financial adviser. Any amounts displayed should not be seen as an offer of finance or taken as financial advice. The interest rate, fees and loan term used in this calculation may not actually represent those available from lenders. Actual interest rates, fees and loan terms will vary per lender and are typically based on an assessment of your credit risk and responsible lending criteria. Any repayment amounts displayed are indicative only and have been calculated using several other indicative inputs. The interest rate used in this calculation is an arbitrary 13.80%, however exact interest rates vary per lender. The term of the loan used in this calculation is 208 week. Exact terms available vary per lender although options typically include 6, 12, 18, 24, 36, 48 and 60 months. This calculation also includes two typical mandatory fees charged by lenders. These are an account admin fee of \$8.00 per month (other payment frequencies may be available) and a one-off establishment fee of \$422.00. Typically, this fee can be paid upfront or, as in this calculation, be capitalised over the contract term, ie. included in the loan amount. These fees can vary per lender and other non-mandatory fees and charges may also apply. The total amount of repayments has been calculated by multiplying 208 weekly repayments (based on a 208 week term) by the weekly repayment amount of \$79.57 which equals \$16,551.34. This calculator does not consider any of your own personal circumstances and we strongly suggest you seek budgeting advice prior to committing to any loan contract. Responsible lending criteria and lender terms and conditions will likely apply to any finalised loan contract. Proof of security and/or vehicle insurance may also be required before proceeding.